

# State of Wyoming Corner Record

(In compliance with the CORNER PERPETUATION AND FILING ACT, Wyoming Statutes, 1997 Section 33-29-140 et. seq., and the Rules and Regulations of the Board of Professional Engineers and Professional Land Surveyors)

Reverse side of this form may be used if more space is needed.

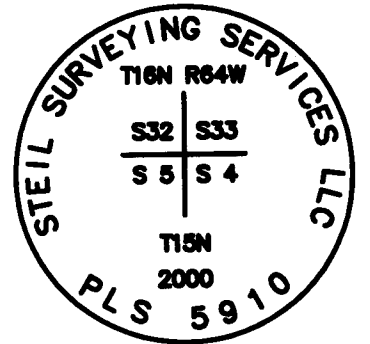
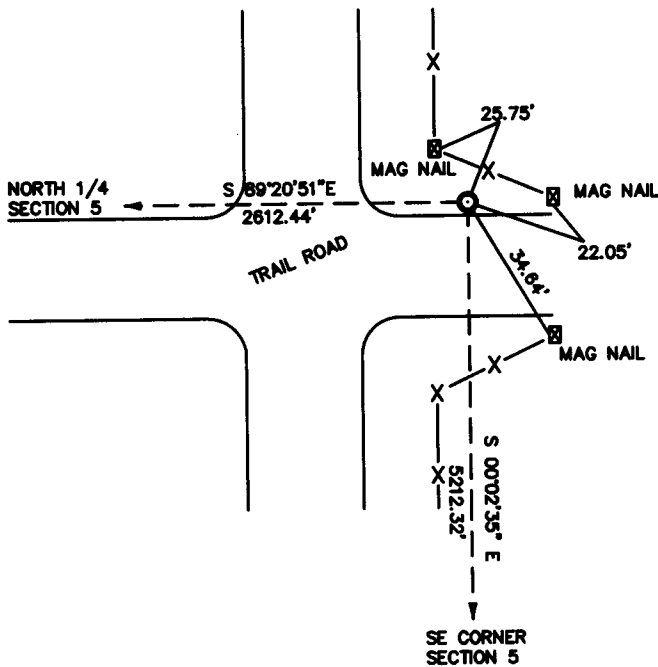
Record of original survey and citation of source of historical information (if corner is lost or obliterated). Description of corner monumentation evidence found and/or monument and accessories established to perpetuate the location of this corner. Sketch of relative location of monument, accessories, and reference points with course and distance to adjacent corner(s) (if determined in this survey). Method and rationale for reestablishment of lost or obliterated corner.

**RECORD:** UNKNOWN

**MONUMENT FOUND:** FOUND NOTHING.

**MONUMENT SET:** SET 5/8" X 24" REBAR WITH A 3/4" ALUMINUM CAP.  
RESET BY SINGLE PROPORTION.  
CAP STAMPED AS SHOWN BELOW.

**REFERENCES:** SET MAG NAILS FOR REFERENCE.



Date of Field Work: 3/15/00

Office Reference: 20096

## Monument Inscription

### Cross Index Plat

	1	2	3	4	5	6	7	8	9	10	11	12	13	14	15	16	17	18	19	20	21	22	23	24	25
A																									
B																									
C		6	5	4	3	2	1																		
D																									
E																									
F																									
G																									
H																									
I																									
J																									
K																									
L																									
M																									
N																									
O																									
P																									
Q																									
R																									
S																									
T																									
U																									
V																									
W																									
X																									
Y																									
Z																									
	1	2	3	4	5	6	7	8	9	10	11	12	13	14	15	16	17	18	19	20	21	22	23	24	25

Firm/Agency, Address

**STEIL SURVEYING SERVICES LLC**  
**1102 WEST 19th STREET**  
**CHEYENNE WY 82001**

Telephone Number: **(307) 634-7273**

This corner record was prepared by me or under my direction and supervision.

SEAL & SIGNATURE



Corner Name NE SECTION Corner Section 5, T 15 N, R 64 W, 6th P.M.  
 County: LARAMIE Wyoming

Cross-Index No.: A-9

RECORDED 7/07/2009 AT 8:32 AM REC# 526192 X# 2121 PG# 865  
 JEBRA K. LATHROP, CLERK OF LARAMIE COUNTY, WY PAGE 1 OF 1